

ColorMax^E Engineered Powder Spray System

*Engineered For
Fast Color Change*



Fast Color Change

High Application Efficiency

Maximum Recovery Efficiency

Optimum System Efficiency



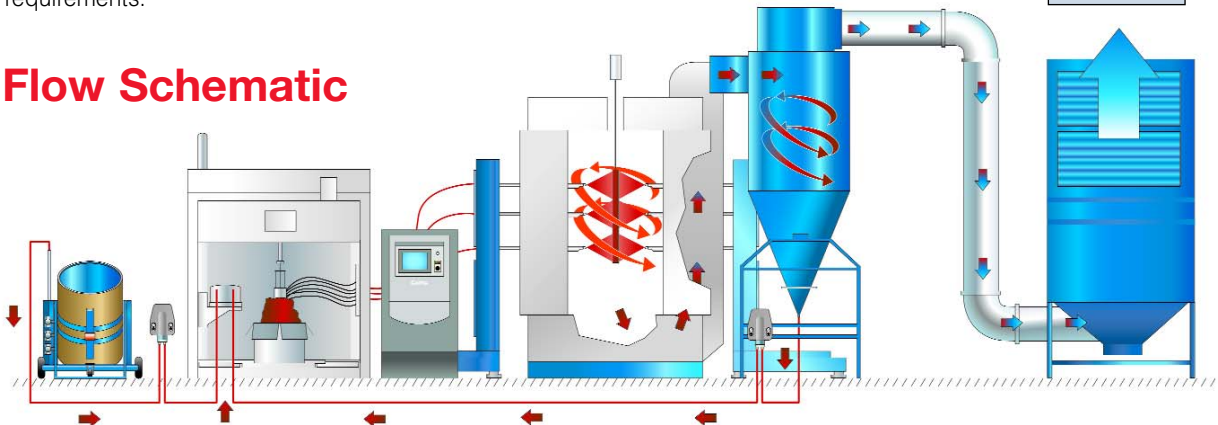
Nordson ColorMax^{®E} Engineered Powder Spray System

The ColorMax powder spray system is an efficient, complete and quick color-change powder application and recovery system. Several system features minimize powder-in-process, promote easy booth cleaning, and provide fast powder-supply-system changes.



The fully integrated approach of the ColorMax system substantially reduces labor cost, downtime and material waste in multi-color powder coating applications. With this enhanced operating flexibility, powder coaters are able to manage smaller batches and a wide range of colors to fit just-in-time production schedules to achieve zero inventory requirements.

Flow Schematic



Contamination-free Color Change

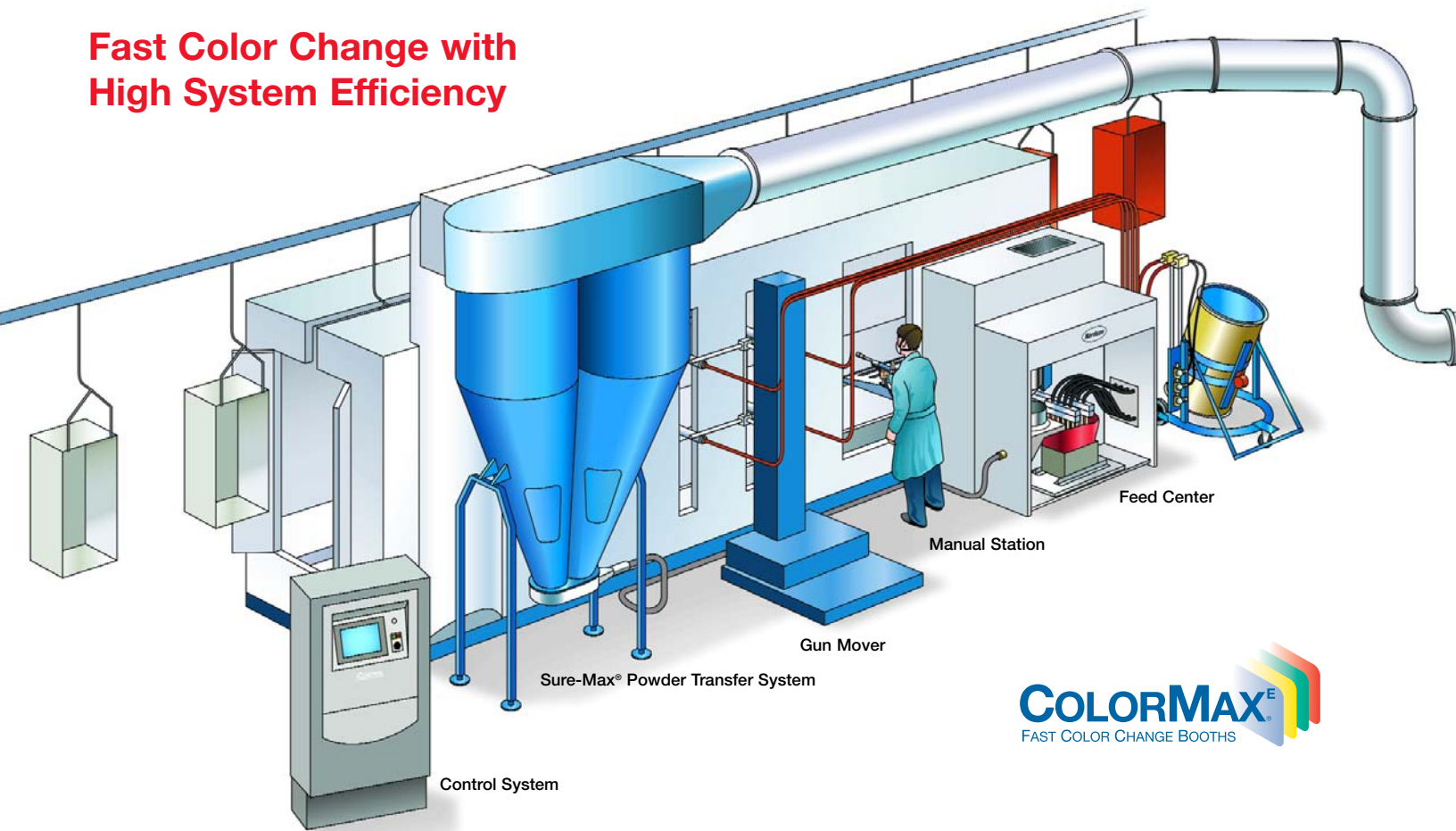
- Uniquely designed, easy-to-clean, steel twin cyclones facilitate complete cleaning without cross-contamination.
- Hinged sections on dual cyclones swing open for easy access.
- Streamlined, no-inlet-ductwork design provides easy visual inspection of areas that could cause contamination.



Improved Powder Recovery/Recycling

- The Sure-Max[®] powder transfer system option is the ideal high-capacity, multiple-color solution. It provides complete contamination-free recycling of powder from the cyclones and maximum overall operating efficiency.
- The Prodigy[™] HDLV[™] high-capacity system is designed to accommodate coating operations using fewer guns.

Fast Color Change with High System Efficiency



Precision Engineering for Optimum Performance

- ColorMax booth is available with up to six automatic gun slots and two manual openings for operating flexibility.
- Booth design allows for the shortest spray-to-waste time after color change to accommodate varying requirements and maximum reclaim efficiency.

Streamlined Canopy and Booth Design

- The booth's streamlined canopy is constructed with patented Apogee® composite material for higher system efficiency, structural strength and minimal powder retention/attraction to the booth.
- Apogee material allows for rapid powder recycling, easy cleaning and improved color-change time.
- The stainless-steel booth floor provides improved durability and provides grounding of operators during cleaning for improved safety.



AeroDeck™ Air Distribution System

- AeroDeck air distribution system and high air face velocities improve powder containment in air stream, minimizing build-up on booth floor.
- AeroWash™ air knives reduce powder-in-process for maximum powder utilization with minimal color-change time.
- Doors on manual openings and exit openings to the booth ensure higher air face velocities during color change.



Uses Nordson Spray Technology

The ColorMax booth can be configured with a variety of Nordson spray application technologies, including Versa-Spray® II, Tribomatic® and Sure Coat® automatic and manual spray guns.



After Filter

Built-in Safety

The ColorMax system meets applicable NFPA safety requirements to assure safe, highly efficient operation.

AeroWash™ Base Cleaning System

AeroWash base cleaning system uses pulsed

air wash to periodically wash settled powder into AeroDeck air stream.



Powder Feed Center

ColorMax powder feed center is designed for fully automatic recovery, sieving and recycling of powder suppliers' boxes to gun for maximum powder usage and minimal loss.

- Accommodates up to 24 guns, and up to 24 pumps in one feed center.

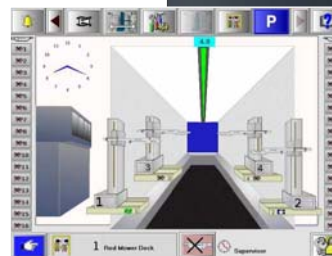
Wide Range of Booth Control Options

- Several patented Nordson application and booth controllers are available to meet specific application and system requirements: iControl® integrated control system and Smart-Coat® IC.
- All Nordson controllers are easily integrated with customer-supplied PLCs, if required.

iControl Integrated Control System

The iControl system includes closed-loop digital flow control for atomizing and flowrate to the pump, and a single 12" LCD color touch screen with icon-based graphics for easy operation. The system

also includes a two-unit 128MB compact flash memory for operating system and program storage allowing operators to store up to 255 presets per memory card for all application parameters.



The iControl system also provides user-programmable presets for In/Out Positioning of Gun Movers and Reciprocator Control.

For in/out positioning of guns, features include user-programmable presets for lancing, contouring, and positioning based on part depth, shape and width. Automatic gun-mover control provides additional application flexibility and greater film-build control.

For reciprocator control, features include user-programmable presets for variable-stroke speed and variable-stroke length. Reciprocator control provides additional flexibility and greater control for varying part heights and part speeds.



- In-line pump design enhances quick and thorough cleaning.
- Pulse-cleaning manifold sends powerful bursts of air through siphon tubes, pumps, powder hoses and guns for quick, effective automatic cleaning between colors in less than three minutes.

Automatic Gun Cleaning

Automated gun-cleaning minimizes manual cleaning procedures beyond general cleaning of booth interior, to ensure exchange of powder containers for additional colors is kept to a minimum for fast color changes.

ColorMax^E Booth Specifications

BOOTH	FEED HOPPER VERSION	FEED CENTER VERSION
Booth Base Width	4.5 m, 6.0 m, 7.5 m, 9.0 m	4.5 m, 6.0 m, 7.5 m, 9.0 m
Booth Base Length	1.5 m, 1.75 m, 2.0 m, 2.25 m, 2.5 m	1.5 m, 1.75 m, 2.0 m, 2.25 m, 2.5 m
Booth Roller Base	Yes	Yes
Booth Canopy	Apogee	Apogee
Booth Cleaning Blowoff Gun	Standard	Standard
Feed Center	Not Available	Standard
Gun Cleaning Purge	Not Available	Standard
Gun Outside Blowoff	Optional	Standard
Fire Detection (FS-10R†)	Standard	Standard
POWDER DELIVERY		
Feed Center Sieve	Not Available	Standard
Vibratory Sieve 600 18/Guns	Available	Not Available
Nordson Sieve	Available	Not Available
AZO Sieve	Available	Not Available
150 lb. Hopper w/Cart	Available	Not Available
HTM Hopper	Available	Not Available
Automatic Guns (Versa Spray [®] II)	Optional	Not Available
Automatic Guns (Sure Coat [®])	Optional	Standard
Cyclone Transfer	Transfer Pumps	(A) Optional Sure-Max [®] Powder Transfer System (B) HDLV [™] Transfer System for 18 guns or less
GUN CONTROL / POSITIONER		
Auto Gun Console	Standard	Standard
Auto Gun Purge	Optional	With Feed Center
Oscillator Standard	Optional	Optional
Fixed Gun Stand	Yes	Yes
In/Out Gun Positioner*	30 in., 48 in.	30 in., 48 in.
CONTROLS		
iControl [®] Integrated Control System	Optional	Optional
Smart-Coat IC	Optional	Optional
Encoder Assembly	Standard	Standard
Part ID Stand	Standard	Standard
Photo Eyes (ATC)	Standard	Standard
Light Curtain (Vertical)	Optional	Optional
Light Curtain (Horizontal)	Optional	Optional

†FS-10R is a trademark of Fire Sentry Corporation
*Varies with booth width and gun length



For more information on ColorMax® powder spray systems,
talk with your Nordson representative or visit our website at

www.nordson.com/powder

- Unique booth design and **easy-to-clean, steel twin cyclones** facilitate complete cleaning without cross-contamination of colors.
- **AeroDeck air distribution system** uses high air velocities over 0.7 m/sec (140 ft/min) to ensure improved powder containment in the air stream, minimizing build-up on the booth floor during spraying.
- **AeroWash air knives** reduce powder-in-process for maximum powder utilization with minimal color-change time.
- **ColorMax powder feed center** for fully automatic recovery, sieving and recycling of powder suppliers' boxes to guns delivers maximum powder usage and minimal material loss.
- No duct for no doubt that the system is clean. **No inlet ductwork** ensures easy visual inspection of areas of the system that could cause contamination between colors.
- **iControl gun control system with patented Select Charge® technology** provides application-specific coating modes for unmatched application efficiency.
- The iControl system also provides **user-programmable presets for in/out positioning of gun movers and reciprocator control**.
- **Feed system provides powerful bursts of air through the in-line pumps**, powder feed tubing and spray guns for fast cleaning.
- Nordson **in-line powder pumps** provide improved efficiency and enhance quick and thorough cleaning.
- **Non-conductive Apogee canopy** minimizes powder retention inside system during operation for maximum application efficiency and faster color change.
- **Hinged cyclone sections** provide easy operator access to powder contact surfaces for inspection and easy cleaning during color change.
- **Fully integrated system** with each component optimized for fast color change.
- **AeroWash base cleaning system** uses a pulsed air wash to periodically wash settled powder into the AeroDeck air stream inside the booth to minimize powder retention and faster cleaning.
- **Stainless steel floor** provides improved durability and cleanability to reduce color-change time with greater operator safety.
- **Wide range of booth control options** available to enhance operating efficiency of powder system for reduced operating costs and downtime.
- **Internal gun purge** reduces manual clean-up time during color changes.
- **Roll-on/roll-off capability** with dual position ductwork allows cleaning in an off-line position while a clean booth with a different color is positioned in-line and operated.
- **Meets applicable NFPA safety requirements** to assure safe, highly efficient operation.
- **Automated external gun cleaning** feature minimizes manual cleaning beyond cleaning of the booth interior for faster color change.
- **Electronic gun mover positioner** allows guns to automatically position based on part size, and also home position for automatic external gun cleaning.

For more information, talk with your Nordson representative or contact your Nordson regional headquarters office.

United States

Amherst, Ohio
Telephone: 800.626.8303
Facsimile: 888.229.4580
Web: www.nordson.com/powder
E-mail: powder@nordson.com

www.nordson.com

Canada

Markham, Ontario
Telephone: 800.463.3200
905.475.6730
Facsimile: 905.475.8821

www.nordson.ca

Europe

Erkrath, Germany
Telephone: 0049.211.9205.141
Facsimile: 0049.211.9252.148
E-mail: info@de.nordson.com

Japan

Tokyo, Japan
Telephone: 81.3.5762.2700
Facsimile: 81.3.5762.2701
E-mail: ppa.dm@nordson.co.jp

www.nordson.co.jp

Asia/Australia/Latin America

Amherst, Ohio
Telephone: 440.985.4000
24-hour message service:
440.985.4797

E-mail: intcustomerservice@nordson.com

